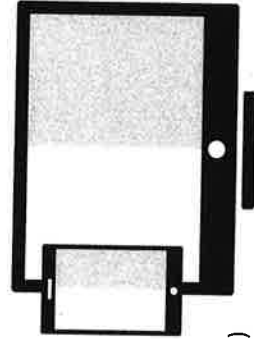


SERVICES OFFERED

- Enrollment for 1,536 Preschool Children
- Full Day / Full Year Services
- Voluntary Pre-Kindergarten
- Meals, including special diet needs
- Special Needs, including speech, developmental, and behavioral
- Dual Enrollment with Orange County Public Schools

CURRICULUM/RESOURCES



- HighScope (Modified)
- Nemours Bright Start
- DLM (Developmental Learning Materials)
- VPK Lesson Plans
- PBIS: (Intervention)
- IMIL (I'm Moving I'm Learning)

PARENT ENGAGEMENT TRAINING OPPORTUNITIES



- Getting Ahead in a Just Gettin' by World
- For Me, For You, For Later-Financial Literacy
- Staying Ahead Mentoring Program
- Incredible Years
- Job Partnerships of Central Florida
- Abriendo Puertas "Opening Doors"
- Empower U - Fifth Third Bank
- 24/7 Dads

PROGRAM GOVERNANCE



- Policy Council
- Health Services Advisory Committee
- Parent Family & Community Engagement Resource Committee
- School Readiness Committee

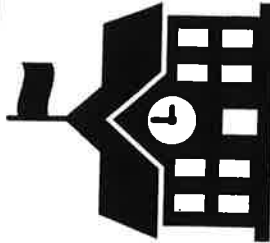
ORANGE COUNTY 2100 E Michigan St.

ORANGE COUNTY HEAD START FACT SHEET

PROGRAM ORGANIZATIONAL STRUCTURE

22 Head Start Centers Countywide

82 Class Rooms



FUNDED ENROLLMENT 1,536 CHILDREN

LOCAL EDUCATION AGENCY

Orange County Public Schools

SERVICE UNITS

- Early Childhood Development & Operations
- Parent Family & Community Engagement (PFCE)
- Childhood Health and Parental Services

FUNDING SOURCES

Federal • USDA • VPK • County

SPECIAL INITIATIVES

Cooperative Extension Garden Project

