

CENTRAL FLORIDA  
COMMISSION ON  
HOMELESSNESS

Street Outreach

HMIS Training Request

SPM's

Street Outreach

Project Type Spotlight



### What is Street Outreach?

Street Outreach is a project type whose workers identify and engage people living in unsheltered locations, such as in cars, parks, abandoned buildings, encampments, and on the streets, and serve critical roles within systems for ending homelessness.

Effective street outreach reaches people who might not otherwise seek assistance or come to the attention of the homelessness service system and ensures that people's basic needs are met while supporting them along pathways toward housing stability.

-  Street Outreach efforts emphasize safety and reduce harm
-  Street Outreach is Person-Centered, Trauma-Informed, and Culturally Responsive
-  Street Outreach is Systematic, Coordinated and Comprehensive
-  Street Outreach is Housing Focused

### Street Outreach in Our Community

Aspire Health (3 project EDAs, 10 CMs)	Community Hope Center (1 project EDA, 5 CMs)
Covenant House (1 project EDA, 5 CMs)	HCCH (5 project EDAs, 9 CMs)
Park Place BH (1 project EDA, 4 CMs)	Step Up on Second (1 project EDA, 2 CMs)

### How is Street Outreach data used?

APR/CAPER

CES Registry

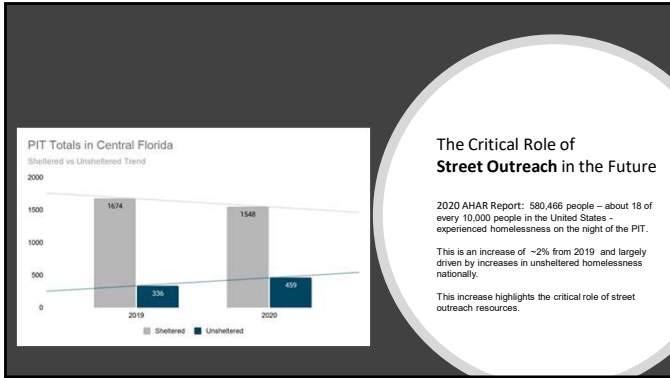
SPMs: Exits and Returns

Community Snapshot

PATH Report

### 2020 Data for Street Outreach

- 938 unique individuals had extended engagement
- Services were provided to 2398 unique individuals
- 22,113 services logged
- 40% of exits are to shelters or permanent housing



### The Critical Role of Street Outreach in the Future

2020 AHAR Report: 580,466 people – about 18 of every 10,000 people in the United States - experienced homelessness on the night of the PIT.

This is an increase of ~2% from 2019 and largely driven by increases in unsheltered homelessness nationally.

This increase highlights the critical role of street outreach resources.

## Current Living Situation

- Current Living Situation replaces the retired field “Contacts”
- This element collects information about where a person is currently sleeping and should be updated at every contact
- This is used to calculate “Rates of Engagement” in APR/CAPER reports

## Date of Engagement

Date of Engagement (Street Outreach Only)

- Date of Engagement is collected when a client becomes engaged with a plan to address their homelessness
- Date of Engagement is used to calculate “Rates of Engagement” in APR/CAPER reports

## What is a “Contact” vs an “Engagement”?

- A “Contact” includes activities such as; conversations between the street outreach worker and the client about their well-being or needs, an office visit to discuss their housing plan, or a referral to another community service
- The purpose of collecting contacts is to provide information on the number of contacts it takes to fully “engage” the client
- A client is considered “engaged” when they are working with the street outreach worker to develop a plan to address their situation; this can take the form of a VI-SPDAT or the beginning of a formal case plan
- You can have an infinite number of “contacts” but only one “date of engagement” per enrollment

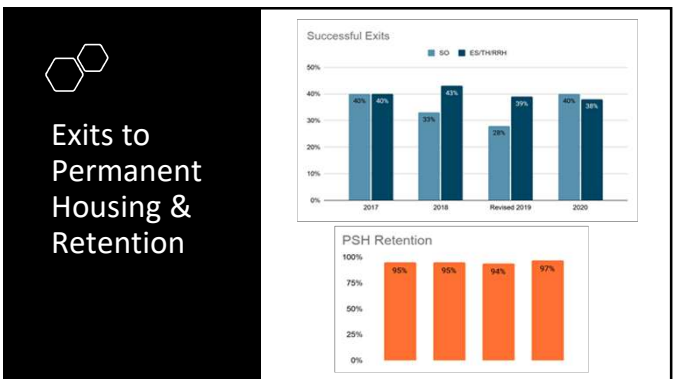
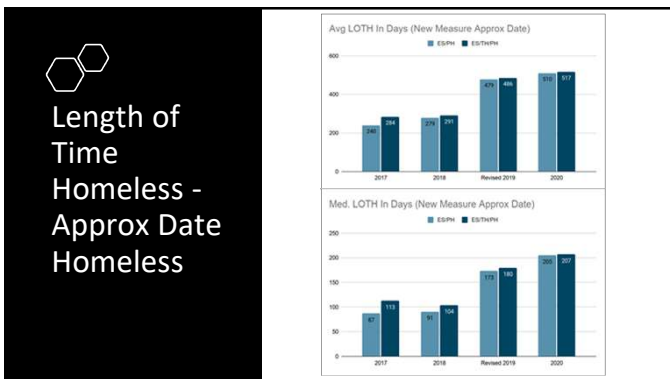
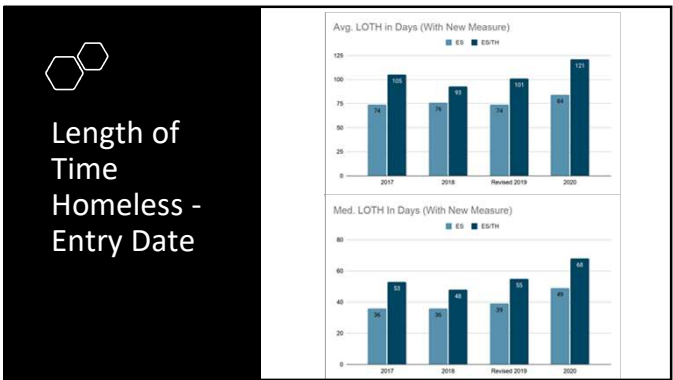
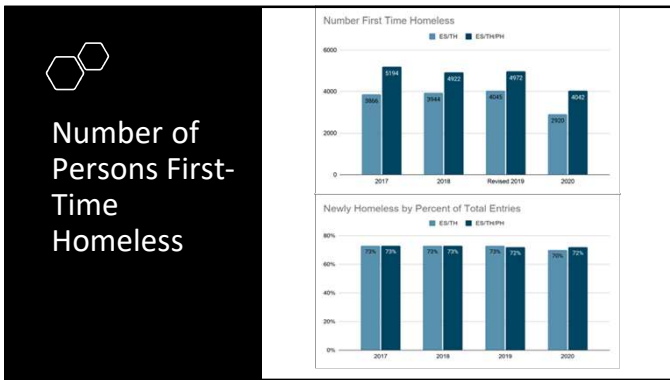
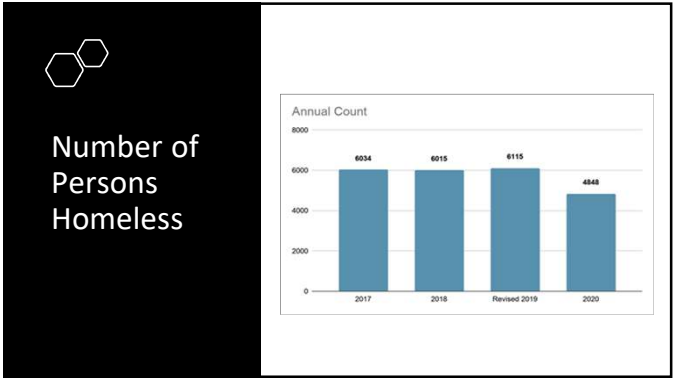
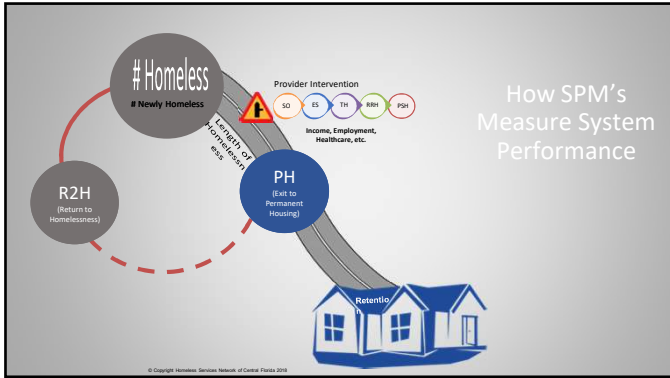
## System Performance Measures

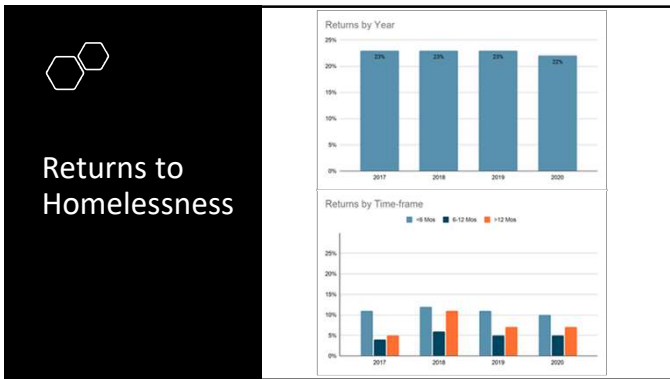
FY-1920

## System Performance Measures

To view past data click [here!](#)

- Number of Persons Homeless
- First-Time Homelessness
- Length of Time Homeless
- Income Growth - CoC Funded
- Exits to Permanent Housing & Retention
- Returns to Homelessness





## Barriers

- Location
- Issues with relapse
- Criteria to access vouchers- Landlords willing to accept vouchers
- Staying in housing participant has gotten comfortable in and then having to relocate
- Literally homeless but in a program (PHA)
- Long application and orientation

## Vaccine Update

- Eligibility for COVID-19 Vaccination at Orange County Convention Center drive-thru site has been expanded to FL residents 40 years or older.
  - This is *only* at the Orange County Convention Center
  - By appointment only
  - Seniors 60+ who lack transportation may qualify for a free ride from LYNX. You MUST have a scheduled appointment first at the Orange County Convention Center before calling 407-836-3111 to request a scheduled ride
- To register, visit: [www.patientportalfl.com/s/?language=en\\_US](http://www.patientportalfl.com/s/?language=en_US)
- For more information on eligibility, locations, and registration, please visit <https://www.ocfl.net/EmergencySafety/Coronavirus/VaccineInformation.aspx>

## Vaccine Update

- Other Federal and county vaccination sites continue to follow the States eligibility requirements:
  - Persons 50 years of age and older
  - Long Term Care facility residents and staff
  - Healthcare personnel and Caregivers with direct patient contact
  - Employees of educational institutions
  - Sworn law enforcement aged 50 and older
  - Firefighters aged 50 and older
  - Individuals deemed "extremely vulnerable" to COVID-19
    - Your physician must complete the [COVID-19 Determination of Extreme Vulnerability form](#)

## Vaccination Sites

- Orange County
  - <https://www.ocfl.net/EmergencySafety/Coronavirus/VaccineInformation/VaccinationSites.aspx?13fa4d9a1e>
- Seminole County
  - <https://www.seminolecountyfl.gov/departments-seo/boa/county-managers-office/prepare-seminole/emergencyevent.htm?h=vc1a>
- Osuola County
  - <https://www.osuola.org/covid19vaccinations/>
- Vaccines at local pharmacies
  - Public, Wal-Mart and Sam's Club are now offering vaccine appointments through their pharmacies at select locations. Check the individual links for appointment opportunities.
    - Public: [Please check for appointment availability](#)
    - Wal-Mart: [Please check for appointment availability](#)
    - Sam's Club: [Please check for appointment availability](#)