



CFCH
Monthly Members'
Meeting
April 22, 2025

A large, dark orange watercolor splash with the word "Welcome!" written in white text in the center. The splash has a textured, irregular edge with some darker spots and a lighter, more diffused area around the main shape. The background is white.

Welcome!

Agenda

Welcome

Florida LEADS Suicide Prevention Training, Lindsay Brown – Florida LEADS

What's PadSplit?, Jack Avera – PadSplit

Homelessness In The News, Kate Santich – Homeless Services Network

Community Legal Services & HSN Emerging Issues, Morgan Cardinal – Community Legal Services

Spotlight on Best Practices, Ebony Tanner – Homeless Services Network

Point-In-Time Count Review, Brian Postlewait – Homeless Services Network

Announcements



Florida LEADS

**Launch Engage Activate Departments and
Systems for Zero Suicide**

QPR Training



QPR (Question, Persuade, Refer) Suicide Prevention Training



An evidence-based training that teaches the warning signs of suicide, how to interrupt the crisis, and how to refer someone to proper care

FREE and virtual, with CEUs available to those licensed with the FL Board of Clinical Social Work, Marriage and Family Therapy, and Mental Health Counseling: Provider Number 50-12347, exp. 3/31/2027

To register or learn more, please scan the QR code or visit the Eventbrite link:

<https://www.eventbrite.com/cc/qpr-suicide-prevention-trainings-93649>

Trainers: Scott Swanstrom, MA
Amber Hodges, BA

Summer 2025 Training Dates
(all in Eastern times)

May 14, 9 AM - 12 PM

June 9, 1 PM - 4 PM

July 15, 9 AM - 12 PM

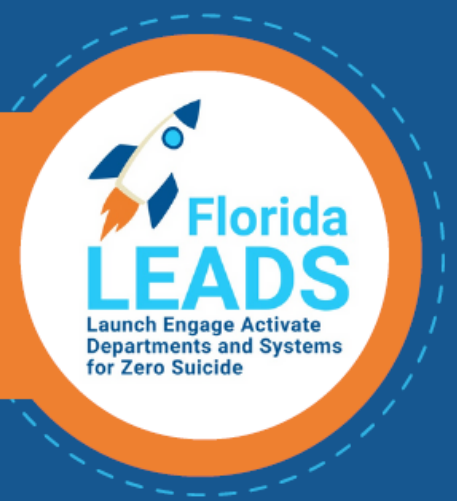
August 21, 9 AM - 12 PM



Safety Planning



Safety Planning: A LINC to Life Suicide Prevention Training



Learn how to develop a collaborative safety plan with someone who is experiencing suicidal thoughts, including identifying triggers, coping strategies, personal and professional supports, opportunities to keep the environment safe or limit risky behaviors, and reasons for living

FREE and virtual, with CEUs available to those licensed with the FL Board of Clinical Social Work, Marriage and Family Therapy, and Mental Health Counseling: Provider Number 50-12347, exp. 3/31/2027

To register or learn more, please scan the QR code or visit the Eventbrite link:

<https://www.eventbrite.com/cc/safety-planning-suicide-prevention-trainings-393829>

Trainers: Scott Swanstrom, MA
Amber Hodges, BA

Summer 2025
Training Dates
(all in Eastern times)

May 6
1 PM - 4 PM

June 18
9 AM - 12 PM

August 19
1 PM - 4 PM



LINC Care Coordination



Linking Individuals Needing Care (LINC) Care Coordination Training



A skills-based training that teaches professionals:

- Suicide risk identification skills
- Rapport-building strategies
- Continuity of care and care transition strategies for those at risk for suicide
- Steps for collaborating with helping professionals to strengthen systems of care to keep people who are considering suicide safe

FREE and virtual, with CEUs available to those licensed with the FL Board of Clinical Social Work, Marriage and Family Therapy, and Mental Health Counseling: Provider Number 50-12347, exp. 3/31/2027

Trainers: Scott Swanstrom, MA
Amber Hodges, BA

**Summer 2025
Training Dates**
(all in Eastern times)

May 22, 9 AM - 5 PM

July 24, 9 AM - 5 PM

To register or learn more, please scan the QR code or visit the Eventbrite link:

<https://www.eventbrite.com/cc/linc-care-coordination-trainings-393899>



Zero Suicide



Zero Suicide Training Workshop



A training workshop focused on a systematic approach to improving suicide care through the adoption of evidence-based and best-practice safety standards

FREE and virtual, with CEUs available to those licensed with the FL Board of Clinical Social Work, Marriage and Family Therapy, and Mental Health Counseling: Provider Number 50-12347, exp. 3/31/2027

Trainers: Scott Swanstrom, MA
Amber Hodges, BA

**Summer 2025
Training Dates**
(all in Eastern times)

May 13
1 PM - 2 PM

July 22
11 AM - 12 PM

To register or learn more, please scan the QR code or visit the Eventbrite link:

<https://www.eventbrite.com/cc/zero-suicide-training-workshops-2354979>



What's PadSplit?


Jack Avera





PadSplit



A woman with long, dark braids is shown from the chest up. She is wearing a black t-shirt with a white graphic and a necklace with small, light-colored beads. The background is dark and out of focus, with a vertical white strip behind her head.

I was like, "What is that?"



We are the nation's largest co-living marketplace

We are an Atlanta-based affordable housing provider dedicated to a simple premise:

Safe, Affordable Housing continues to make a significant impact on people's **quality of life**.





PadSplit works closely with **non-profits** and **municipalities** to address the affordable housing crisis.

A few of our partners who help us bring affordable housing to those who need it most.



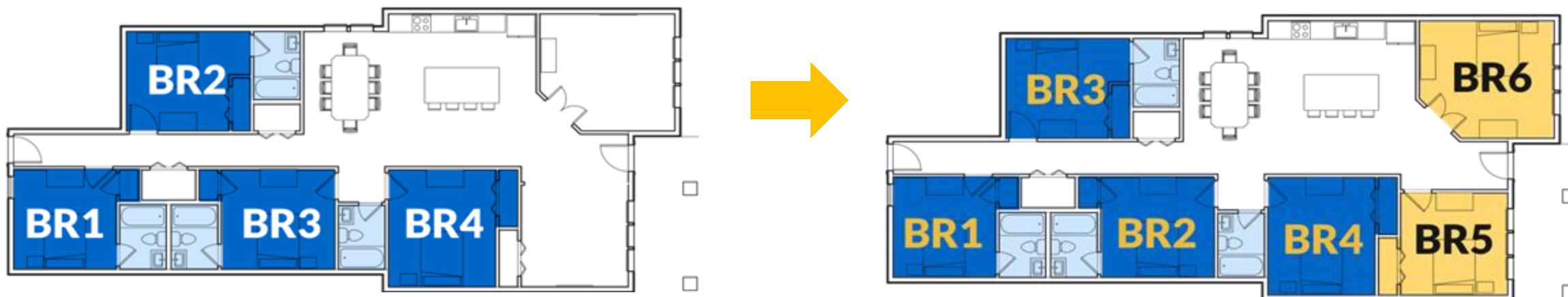
Project Community Connections, INC.
Connecting our clients with a place to call home

Current PadSplit Markets

We open new markets quickly *and* cost effectively.



Before & After PadSplit



THE STRATEGY:

We have the technology and the playbook to help **solve the affordable housing crisis at scale.**

THE TACTIC:

By converting underutilized spaces within a property and creating furnished, co-living environments, real estate investors can open their doors to more renters while charging a lower rent to each of them.

Over 6 years, this model has enabled us to



House
24,000+ people



List
17,000+ units
Across 18 markets

83%

Members are persons of color

\$72 million

in savings created for Members

89%

Members would recommend us to a friend

\$0

in government funding

\$1.9B

Upfront Taxpayer Subsidy Savings



Why PadSplit Co-Living?

⊗ 24/7 Support

PadSplit Support Reps are trained in Trauma Informed Care

⊗ Scale Faster

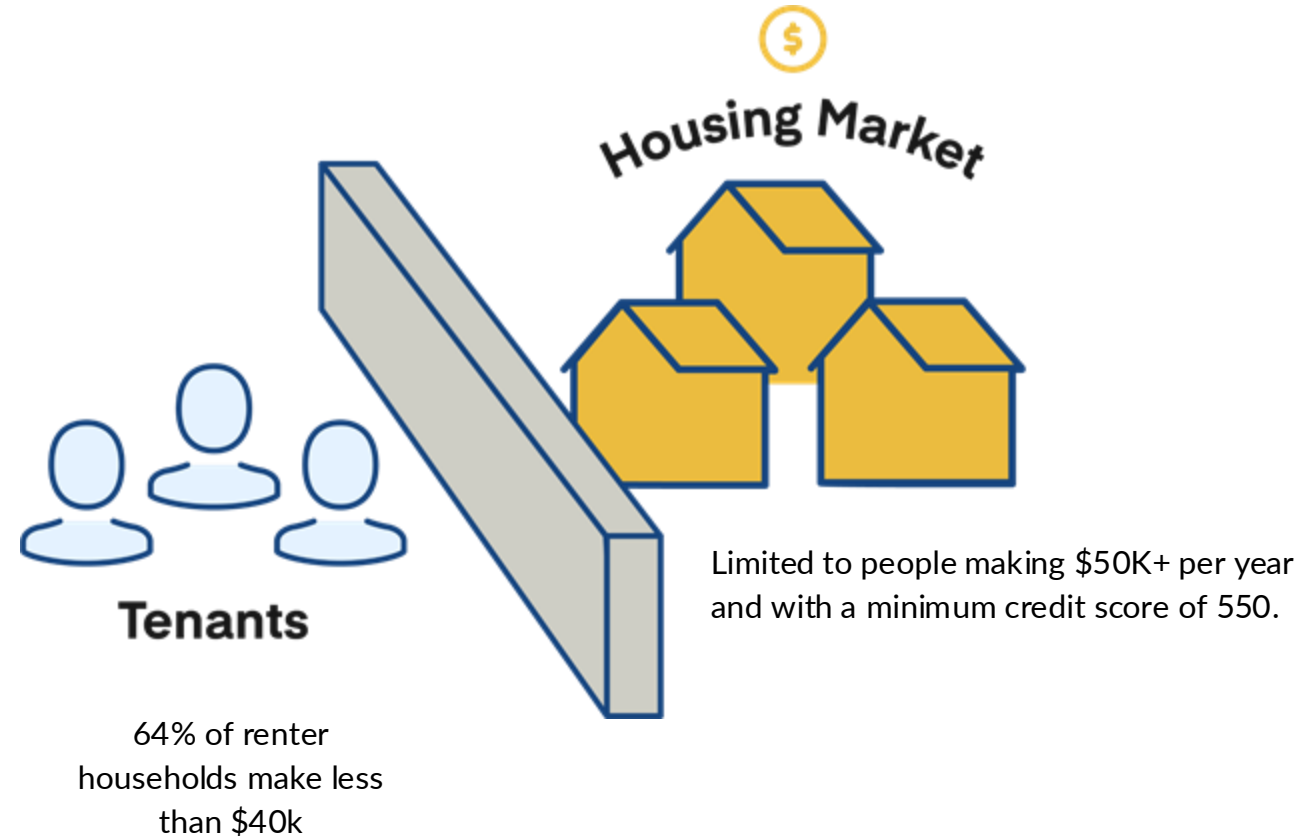
No application fees, background checks, utility activations, furniture

⊗ Big jump from houselessness to single-use apartment

Deposits and rents are just too high for low-income

⊗ No accountability

Choices are few and slumlords abound



Better for communities



Community economic impact:

By accommodating diversity and a range of incomes, employers can more easily staff and grow their businesses.



Neighbor engagement:

PadSplit has a portal for timely response to all neighborhood inquiries or concerns.



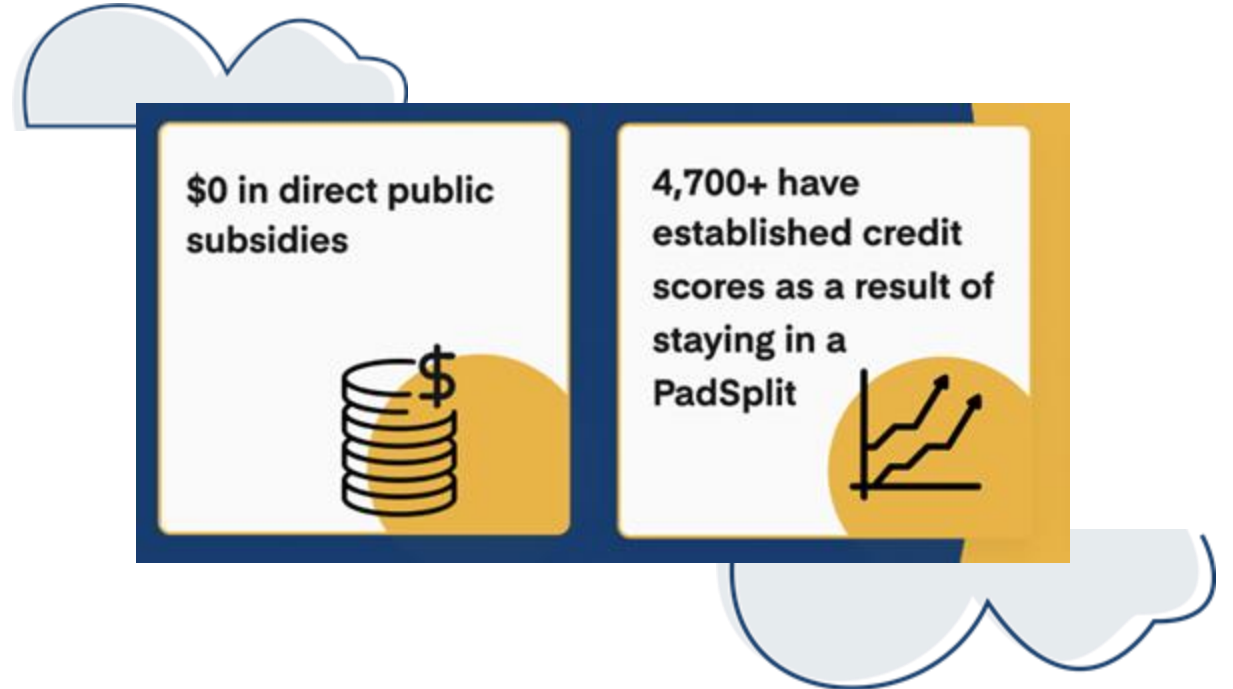
Lower tax burden:

PadSplit reduces the burden on taxpayers for housing the workforce in their community.



Environmental benefits:

Moving workers closer to jobs means fewer emissions. Using existing construction saves thousands of tons of embodied energy and carbon emissions.



PadSplit by the numbers

Cost is 40-50% less than traditional apartments



No minimum credit score required to qualify for a room



Approvals for most in minutes



Fast move-ins, often within 24-hours



No long-term commitment



4,700+ have established credit scores as a result of staying in a PadSplit



Average savings of \$333 per month



Reduced carbon footprint through shared housing



\$0 in direct public subsidies



Economic Impact

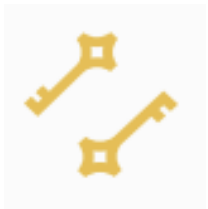
14,000+
We've helped more than 14,000 Members find a place to live.

x


\$209K
\$209K is the average cost for government subsidized affordable housing in the U.S.

=


\$2.93 billion+
PadSplit has saved taxpayers more than \$2.93 billion



How PadSplit works



Affordability and flexibility

Residents choose all-inclusive payments that match their pay schedule.



Easier to qualify

Residents must earn at least 2x their room rate.



Multiple housing choices

We empower our residents to relocate with lots of options across the city. So workers can always be close to their jobs.



Smart collections

We process 30+ payments/house/month but make accounting easy for landlords.



Fast screening and booking

We qualify residents in minutes and book available rooms in hours.



Responsible residents

Our product helps manage resident and landlord accountability.



We are **solving** the affordable **housing** crisis, one room at a time.

After 10 months in her PadSplit, Keosha was able to graduate from her PadSplit room, reuniting her family in a home she purchased.

This is possible in every market.

Help us make this world a reality for the 14 million other Keoshas in the United States and the hundreds of millions more around the world – one room at a time.



Keosha

Member since 2019

“PadSplit is a fresh start at a fraction of the cost, and it helps build a foundation for financial stability. I now truly believe that anything is possible and that PadSplit helped me in ways I could have never imagined.”

 PadSplit

Questions?

Appendix on Next Slide



PadSplit Member Story

Jean Brune, Member turned Host

Jean is PadSplit's first employee and one of its first Members. He has moved from Member to House Leader to homeowner to PadSplit Host in a short two years.

"It was a great experience living in a PadSplit. The members I lived with were all chill, down to earth, and hardworking people who were, just like me, determined to do better for themselves. The house was a short walk from a train station which made it easy to get to and from work. While living in a PadSplit, I was able to pay off credit card debts, medical bills, and pay down my student loans. Eventually, I saved up enough money to put a down payment on a car [and] I was able to put a down payment on a house! The best part about owning this home is turning it into a PadSplit. I can cover the cost of owning a home and provide clean, safe, affordable housing to others who started just like I did. PadSplit is an opportunity for me to build personal wealth."



"Jean was able to coach another PadSplit Member, Keosha, through the home buying process. Two months after moving into Jean's PadSplit, she closed on her very first home and grabbed the keys to her next chapter."

The people serving our community deserve the opportunity to live in it.



“Living in a PadSplit is really a no-brainer if you’re looking to save money. I can’t imagine leaving any time soon, especially when you see how expensive all the other options are.”

Virginia, Age 65
Salesperson & Artist
Las Vegas, NV



Saving 2-3 hours commute by bus, Works at local WalMart,

Improving credit to purchase a home
Christopher, Age 38
Army Veteran
Riverdale, GA



Transitioned from a difficult relationship, Improving credit and building savings to own her own house..

“The next contract I sign will be a mortgage”
Tamyia, Age 38
Teacher
Atlanta, GA



“PadSplit is the best thing that’s ever happened to me. It’s truly incredible to now see the size of my savings account growing on a weekly basis.”

Erika, Age 43
Customer Service Rep
Jacksonville, FL



Improved credit score by 60 points, built savings to start a podcast for recovering addicts, get married, and relocated to Delaware

Richard, Age 28
Preacher / Musician
Dover, DE



“Without PadSplit, I would be homeless until senior housing called me. Who can be homeless for two years waiting? PadSplit has given me a safe place to live.”

Terry, Age 64
MS Survivor
Houston, TX

A sampling of companies that employ PadSplit members



Homelessness In The News

Kate Santich



**HOMELESSNESS
in the NEWS:
April 2025**

**What
You
Should
know...**



Today: Housing NOW! Rally in Gaston Edwards Park

- Part of nationwide call to action led by the National Coalition for the Homeless;
- Asking communities to show support for federal housing and homelessness programs;
- Calling on Congress and the White House to pursue long-term, large-scale investments needed to reduce homelessness and housing insecurity;
- Orlando rally led by Aaron Lewis, co-founder, Family Support Network



Gaston Edwards Park, 11:30 a.m. – 2 p.m.
1235 N. Orange Ave., Orlando, 32804



SODO shelter plan: Is there life after death?

- Orlando city officials have said publicly the idea is dead...
- But there have been some prominent calls to resurrect the plan, including from Pastor David Swanson, residents of the SODO neighborhood, and a new Orlando Sentinel editorial.
- A new website allowing the public to show support for various shelter locations has been created. *Please sign up and share at:*
<https://www.yes2shelterandhousing.com/>

Orange County planning board backs controversial East Orlando homeless shelter



- An Orange County planning board has endorsed a proposed East Orlando shelter operated by Kaleo Ministries on the former site of its Hope City Refuge at 1717 Harrell Rd.
- Its former operation was shuttered by the county fire marshal last year for code violations described as “severe life-safety issues.”
- Kaleo wants to build 120 emergency housing units and 120 transitional housing units on the site, with each unit housing two people. The facility would temporarily house young adults who have aged out of the foster care system, seniors and others for up to two years.
- Approved 5 to 3; now goes before Orange County Commission.

PIT Count data response



► Coverage from all local TV news stations, news radio and newspapers

► See 8 Myths of Homelessness

(<https://www.wintergardenvox.com/articles/8-myths-of-homelessness>):

“Few groups are as misunderstood as those experiencing homelessness. They’re mentally ill! They’re drug addicts! They’re criminals! They’re freeloaders!”

The reasons anyone ends up homeless are varied and complex, but misperceptions that blame folks for their own misfortune continue to persist. VoxPopuli spoke with several local and national experts on homelessness to help bust the eight most enduring myths and gain a better understanding of who’s lacking shelter and why.”

The wait is over!

SALT opens new homeless youth drop-in center



- 5511 West Colonial Drive, Orlando, 32808 (Pine Hills area)
- Open Wednesday — Friday: 9 a.m. to 4 p.m.
- Services: showers, laundry, mail, storage, transportation,
- case management, peer support, SALT library access, charging stations, food, **HOPE!**

Part of Brighter Days program funded in part by \$8.4 million HUD grant and \$1 million in matching funds from the state.

Also operating:

Seminole County Satellite Youth & Young Adult Center (house behind Mars Hill SDA Church), 800 E 2nd St, Sanford, 32771
Mondays, 9 a.m. to 4 p.m.

Osceola County Satellite Youth & Young Adult Center,
1209 E. Donegan Ave., Kissimmee 34744
Tuesdays, 9 a.m. to 4 p.m.

Eligibility: Unaccompanied youth or young adult, age 16-24, experiencing homelessness in Orange, Osceola or Seminole counties

A large, abstract orange watercolor splash graphic on the left side of the slide, with a soft, feathered edge and some darker spots. The rest of the slide is plain white.

Community Legal Services & HSN Emerging Issues

Morgan Cardinal

Legal Access For All

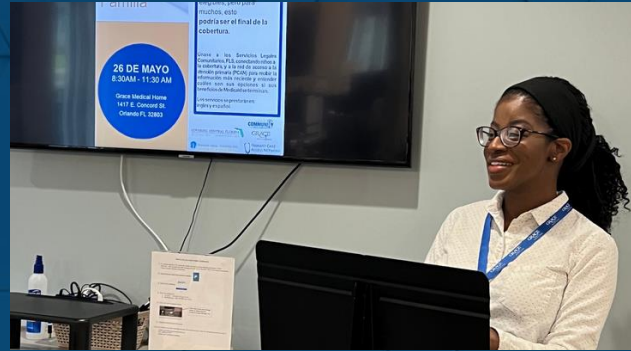
COMMUNITY

— LEGAL SERVICES

A white line-art icon of a woman, likely representing Lady Justice, holding a pair of scales. The icon is positioned to the right of the word 'COMMUNITY' and partially overlaps the 'LEGAL SERVICES' text.

EMERGING ISSUES

Who We Are



Community Legal Services (CLS) is the primary provider of no-cost civil legal services to the most vulnerable in Central Florida, helping them to protect their families, health, and livelihoods.

Our advocates provide no-cost legal advice, and representation, to more than 10,000 people each year.



Emerging Issues

- **Federal Issues:**
 - **Section 8 (Housing Choice Vouchers) reduction in 2026**
 - **FEMA slowdowns**
- **State Issues:**
 - **SSA cuts – impact individuals in Kissimmee, FL and Brevard County**



Contact Us

HELPLINE

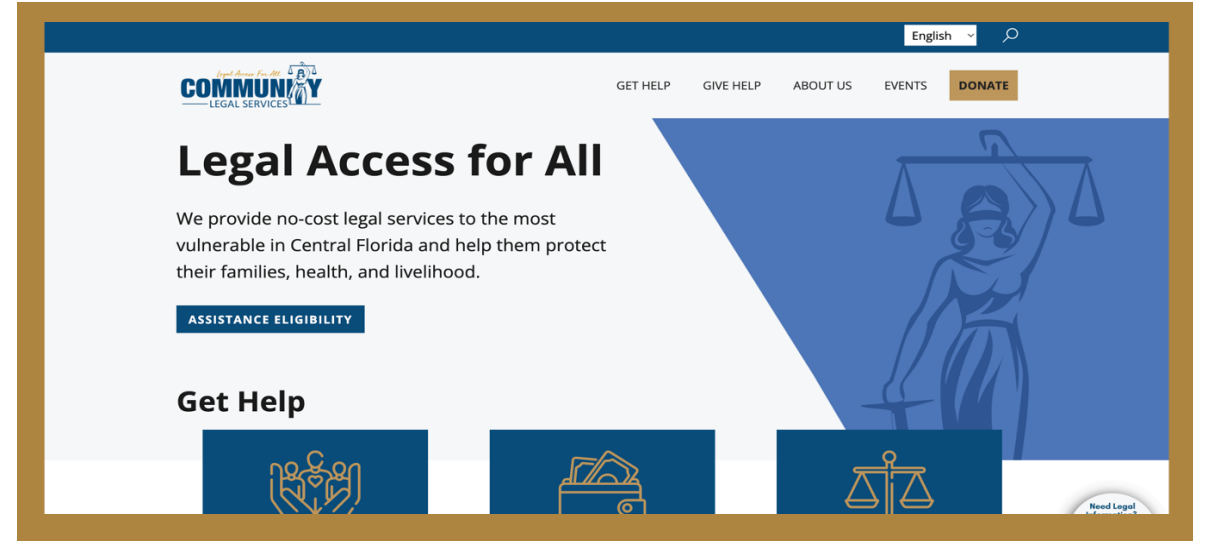
1-800-405-1417

MONDAY AND THURSDAY 8:30-4:30

TUESDAY AND WEDNESDAY 8:30-

6:30

FRIDAY 8:30-3:30



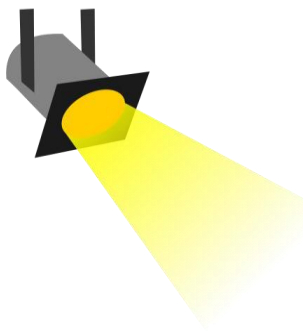
Visit our website
LegalAccessforAll.org
for more information
including self-help materials

Online Application
Self-Help Chatbot
available
24 HOURS/7 DAYS A WEEK

Spotlight on Best Practices

Ebony Tanner





Spotlight on Best Practices

Proudly presented to

Pathways to Home Housing Team

Exemplary Service in the Practice of

Trauma Informed-Care



Spotlight on Best Practices



A graphic of a spotlight with a yellow beam of light shining towards the title.

Spotlight on Best Practices

Exemplary Service in the Practice of
Trauma Informed-Care

Proudly presented to:

Latoya Morris (Family Housing Stability Manager)

Chantelle Wade (Youth System Guide) Janice

Brooks (Youth System Guide)

Stacey Beck (Family Services Manager)

Kelvin Coachman (Program Director)

Roshalle Calcote (Case Manager)

Shayla Brown (Case Manager)

Theresa Bowes (Case Manager)

Russell Donini (Case Manager)

Jeff Cyprien (Case Manager)

Sheelove Dorcena (Public Ally)

Sigiana Kamberaj (MSW Intern)

Jasper Belsham (MSW Intern)



Point-In-Time Count 2025

Brian Postlewait





HOMELESS

POINT-IN-TIME COUNT 2025

Tri-County Sheltered/Unsheltered Count
(Orange, Osceola & Seminole)

PIT Introduction



January 27th, 2025

PIT Totals

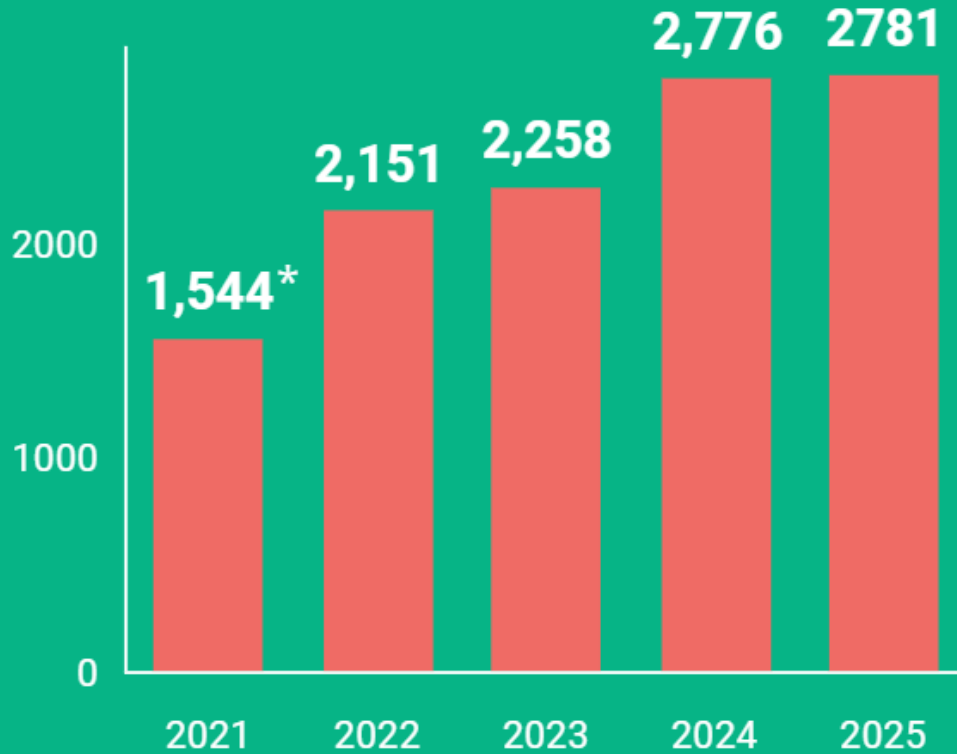


2,781

Total People Counted

▲ 0.2% from 2024

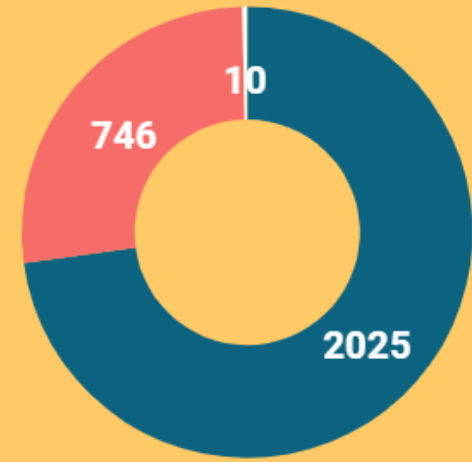
▲ 29% from 2022



PIT Count Last 5 Years

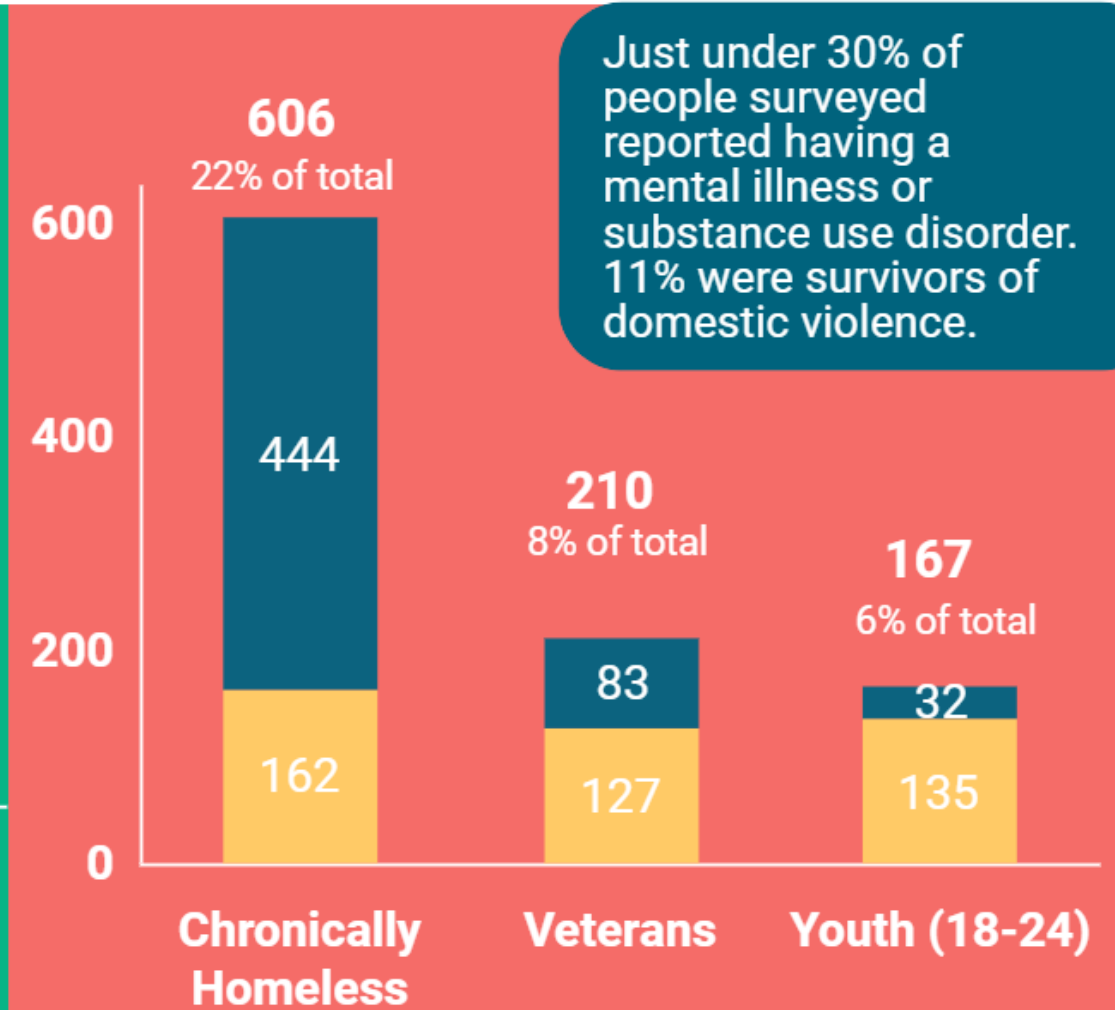
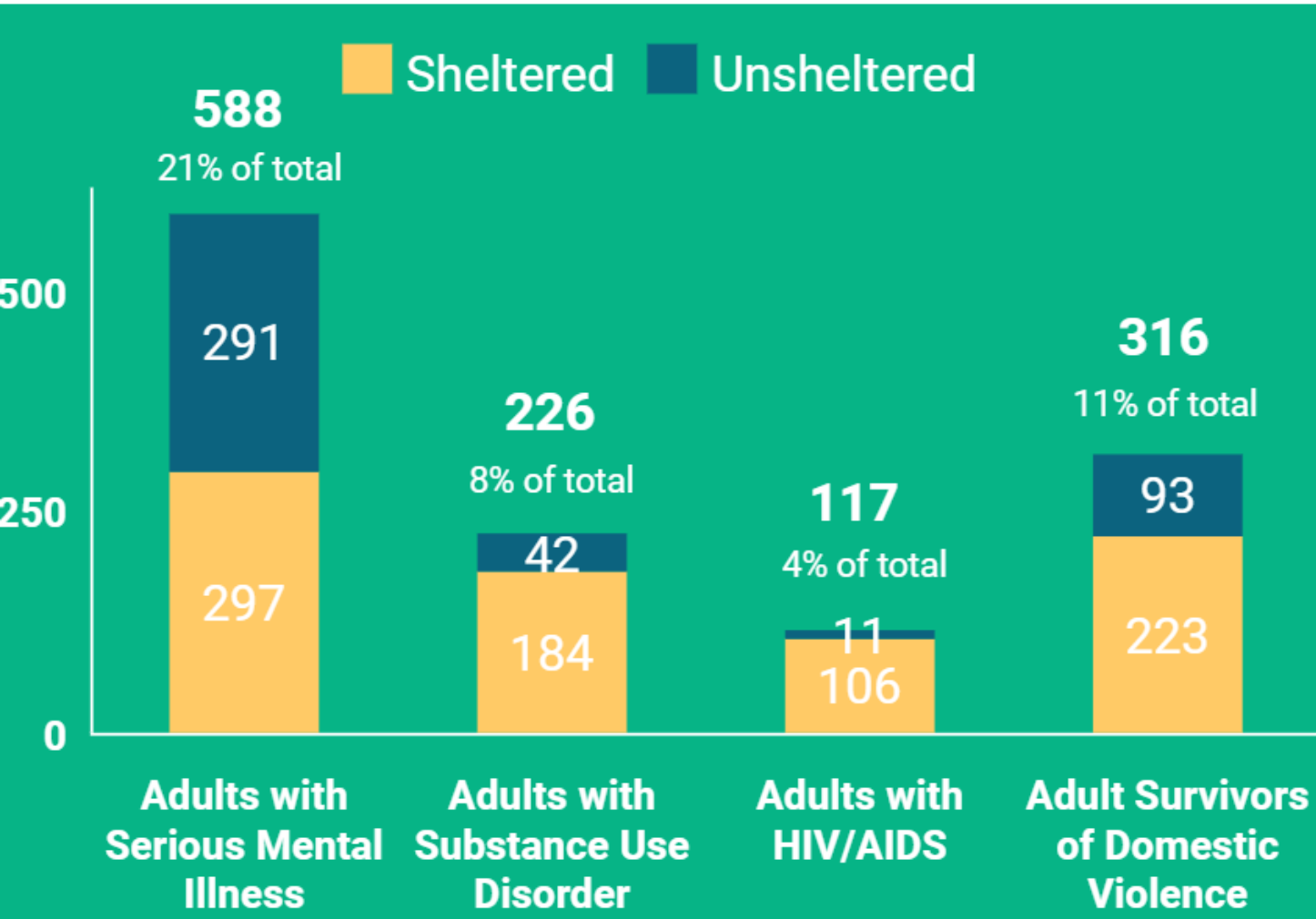
* No unsheltered count in 2021

Household Types

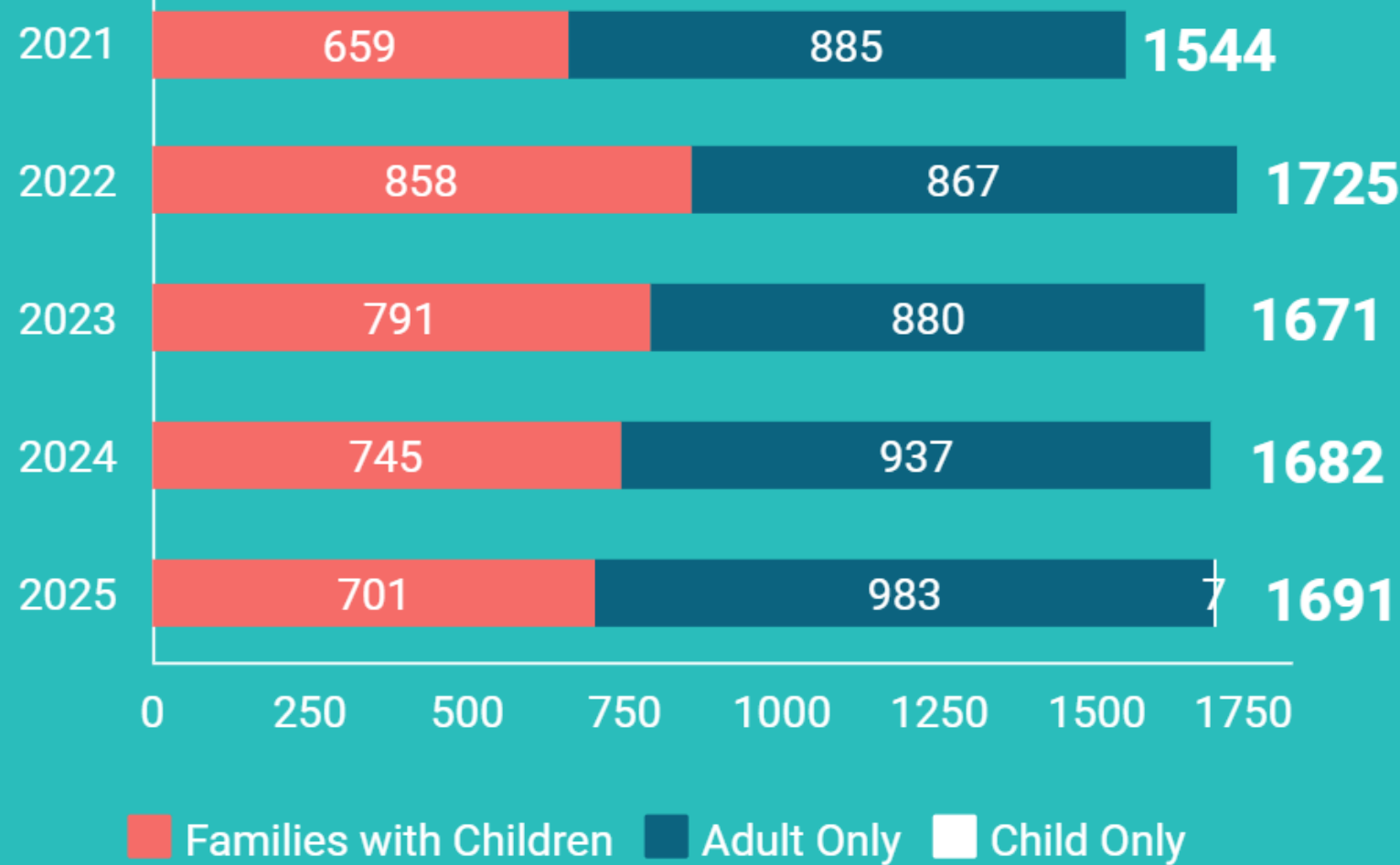


- Adult Only (72.82%)
- Families with Children (26.82%)
- Child Only (0.36%)

PIT Subpopulations



Sheltered Count



The Sheltered Count includes people in emergency shelters (62%) and people in transitional housing (38%).

Shelter capacity has been growing the last few years, with the addition of new funding sources and non-congregate shelter options driving the majority of capacity gains.

Child-only households are a new type of household our community can serve, with the addition of new child-only shelter beds.

Adult-only households in shelter has increased by 14% since 2021.



Unsheltered Count

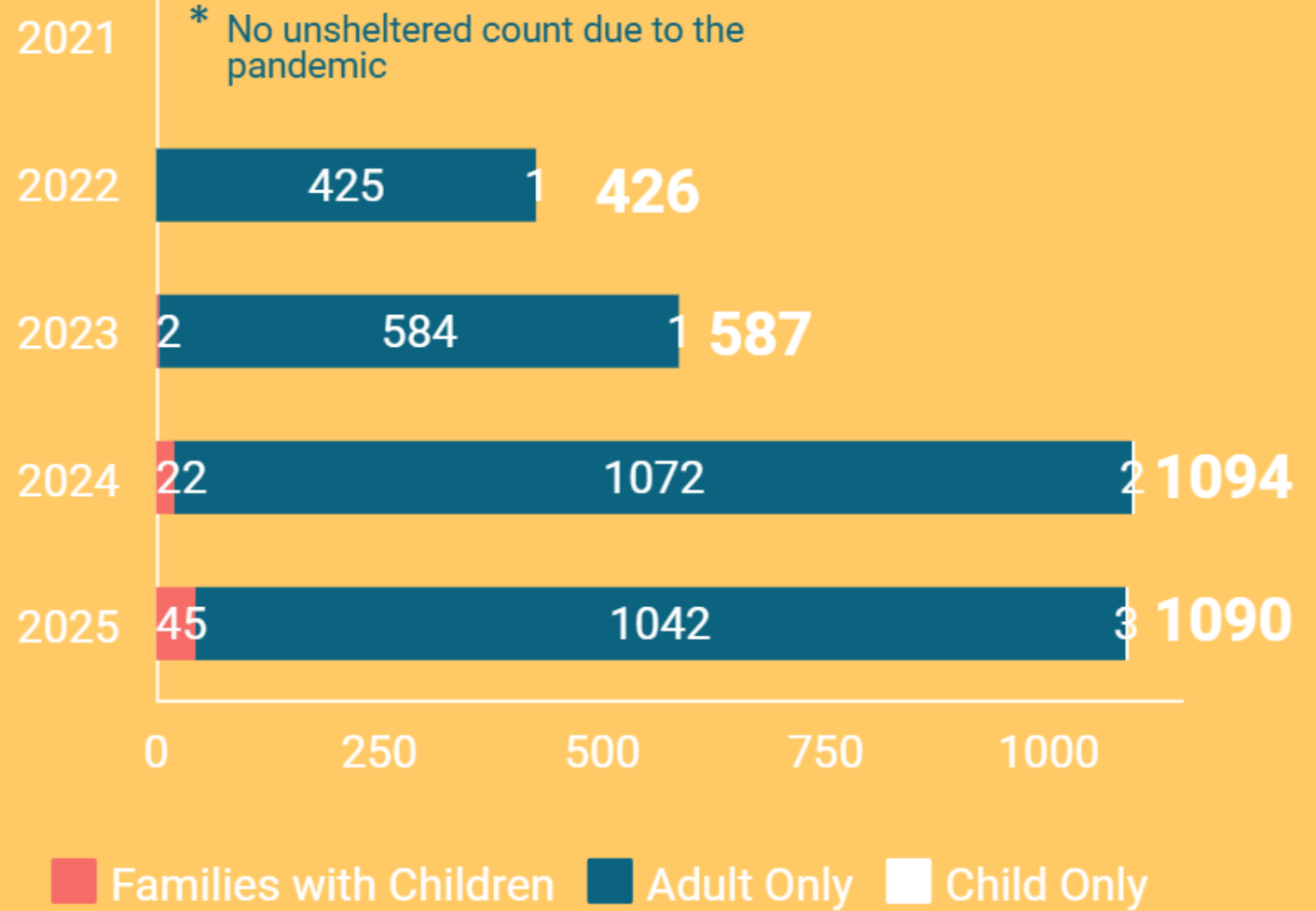
↑ 155%

Increase in unsheltered homelessness since 2022.

The number of unsheltered people surveyed decreased by 9.24% between 2024 and 2025.

The most common places that unsheltered people spent the night were:

- Streets or sidewalk (56%)
- Woods or encampment (23%)
- Vehicle (9%)
- Abandoned building (4%)
- Bus, train station, or airport (1%)
- Under bridge/overpass (1%)
- Other (6%)



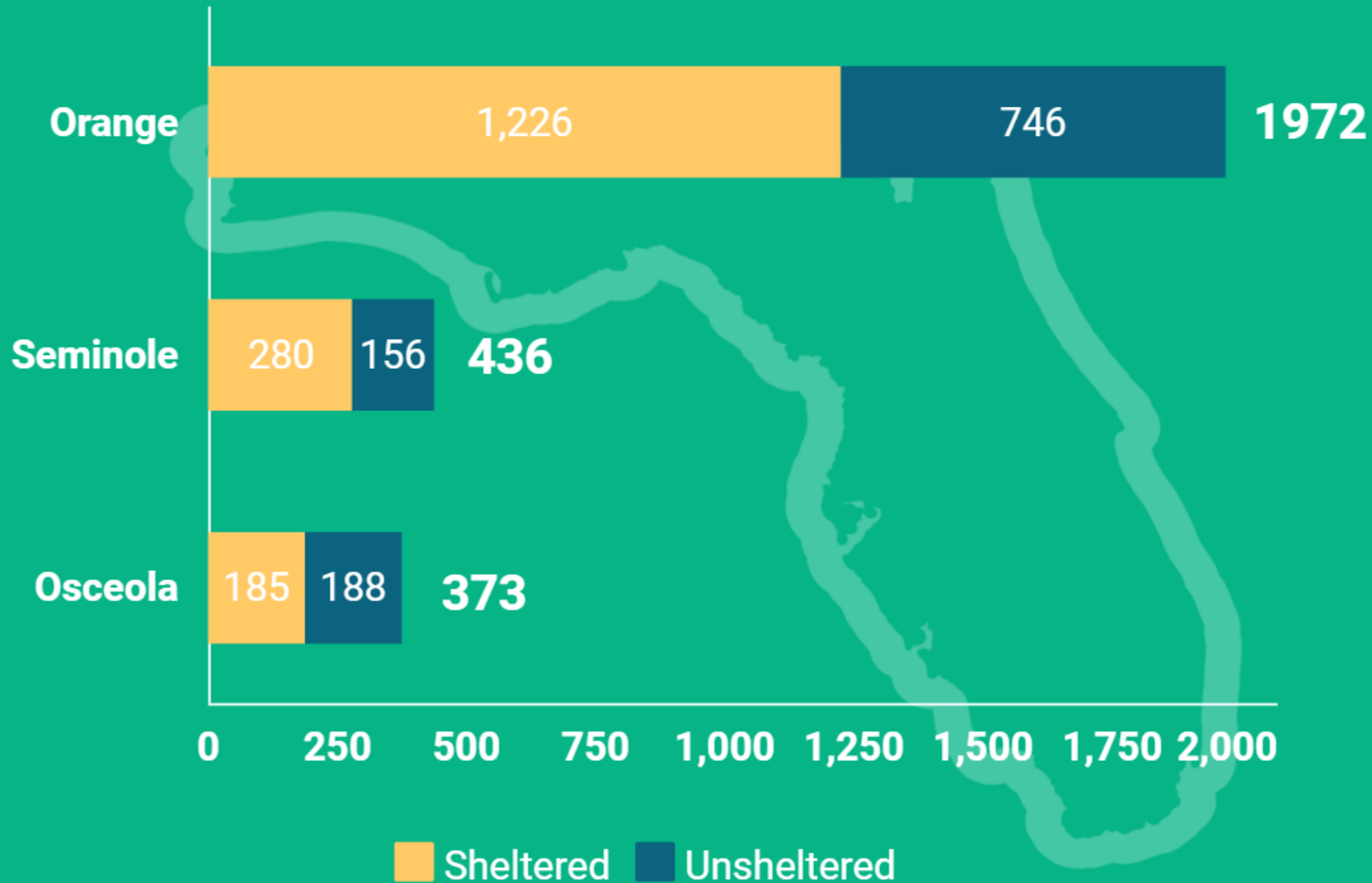
PIT by County

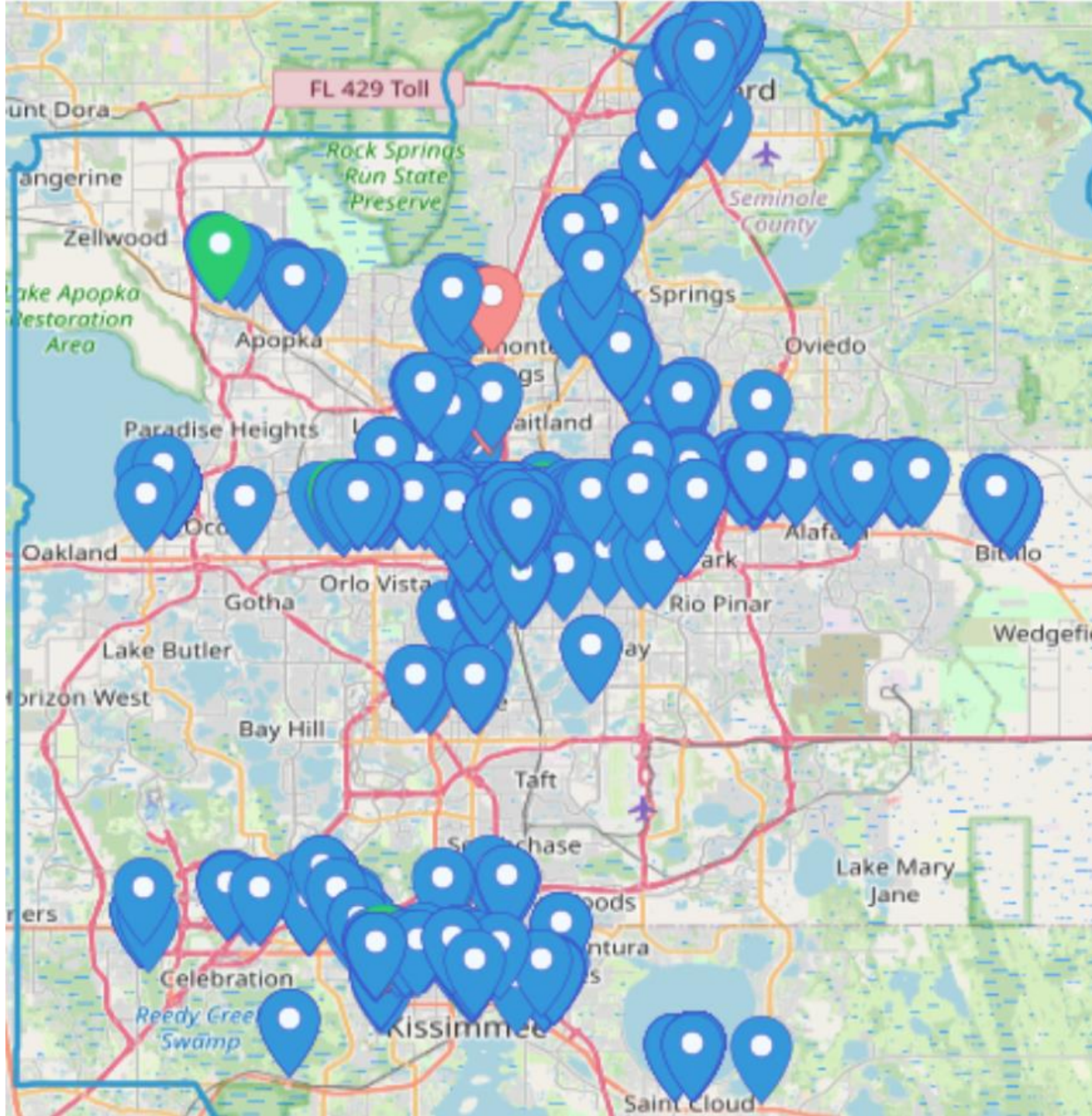
Since 2024, homelessness has
changed in each county by:

Orange | ▼ 2.1%

Seminole | ▲ 3.8%

Osceola | ▲ 8.7%





This map shows the FL-507 service area, which includes Orange, Osceola, & Seminole counties.

The most common locations to survey people were around the Central Florida Transit Corridors:

- Highway 50 E/W
- Highway 17-92 N/S
- Highway 192 E/W

There is increasing visibility of homelessness in the following areas:

- City of Orlando Downtown
- Winter Garden
- Apopka
- Bithlo
- Altamonte Springs
- St. Cloud

Racial and Ethnic disparities continue to be present amongst those experiencing homelessness in Central Florida, compared to the general population.

Homeless Population



Black (44.49%) White (29.9%)
All Other Races (25.61%)

General Population



Black (17.03%) White (74.47%)
All Other Races (8.5%)

Race

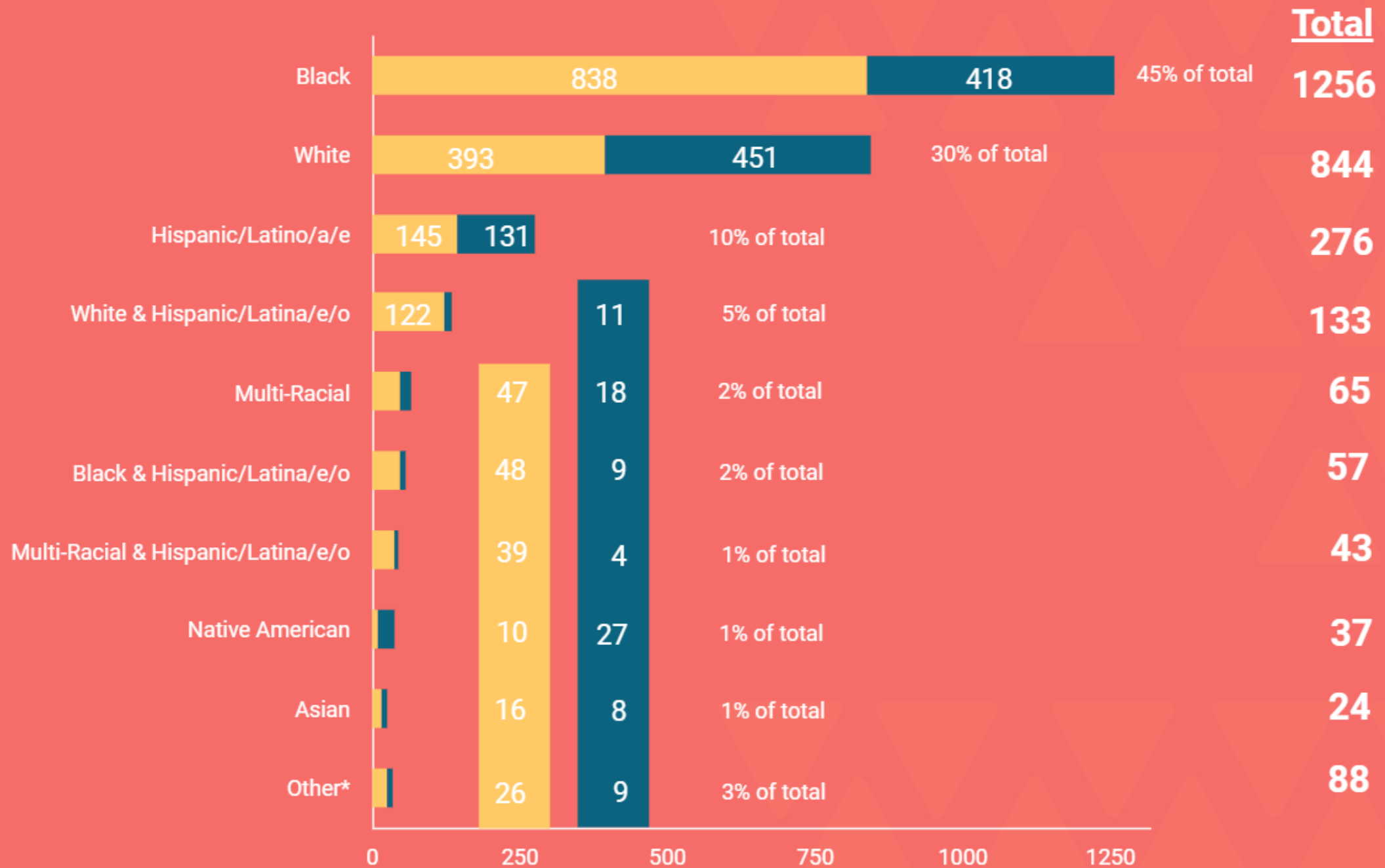
U.S. Census Bureau average estimate of race breakdown for Central Florida (July 1, 2022):

- White (74.47%)
- Black (17.03%)
- All Other Races (8.5%)

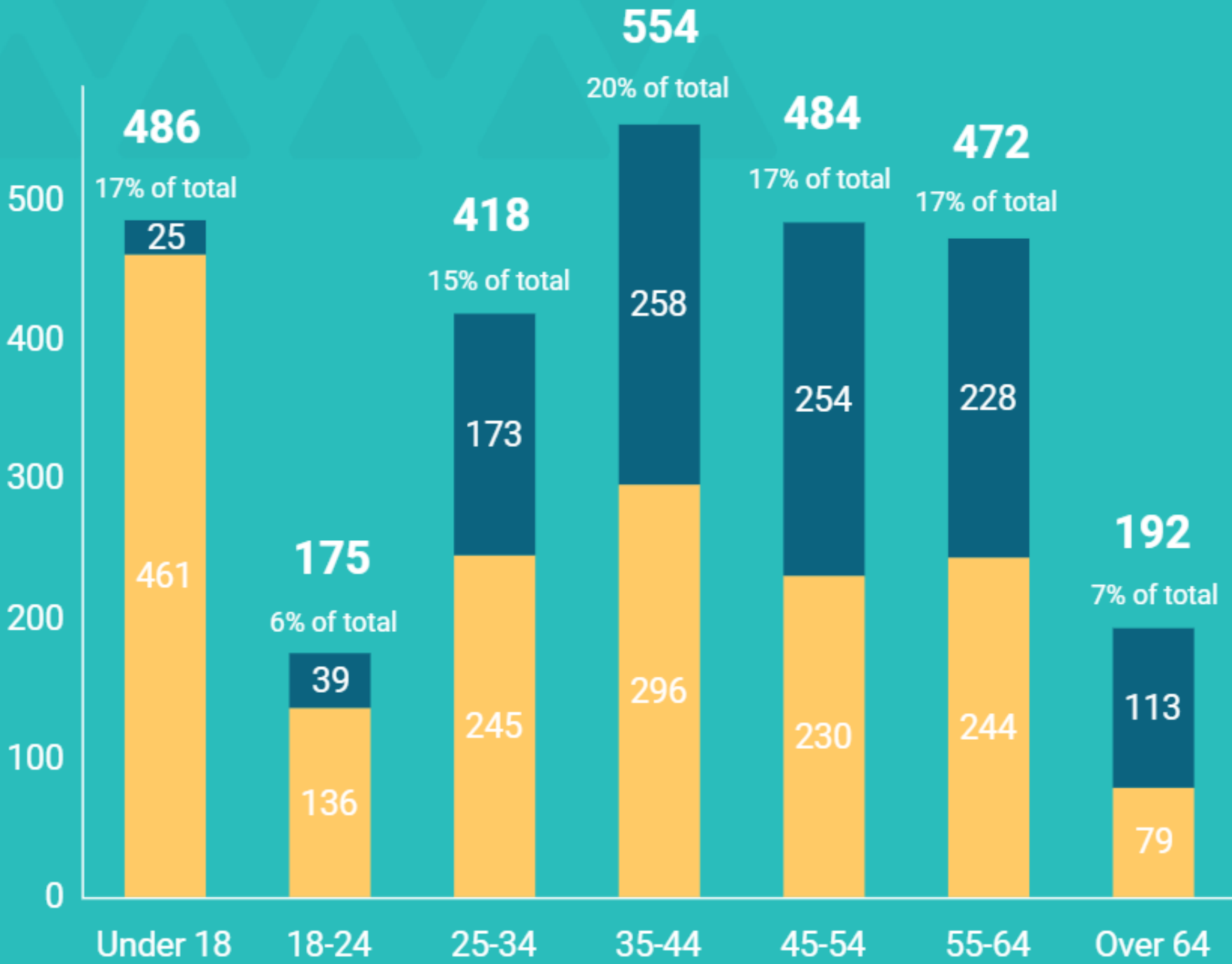
* The "Other" category includes the following races (values too small to picture):

- Native American & Hispanic/Latino/a/e (22)
- Middle Eastern (11)
- Native Hawaiian/Pacific Islander (8)
- Native Hawaiian/Pacific Islander & Hispanic/Latino/a/e (3)
- Asian and Hispanic/Latino/a/e (2)
- Middle Eastern & Hispanic/Latino/a/e (0)

Sheltered Unsheltered



Age



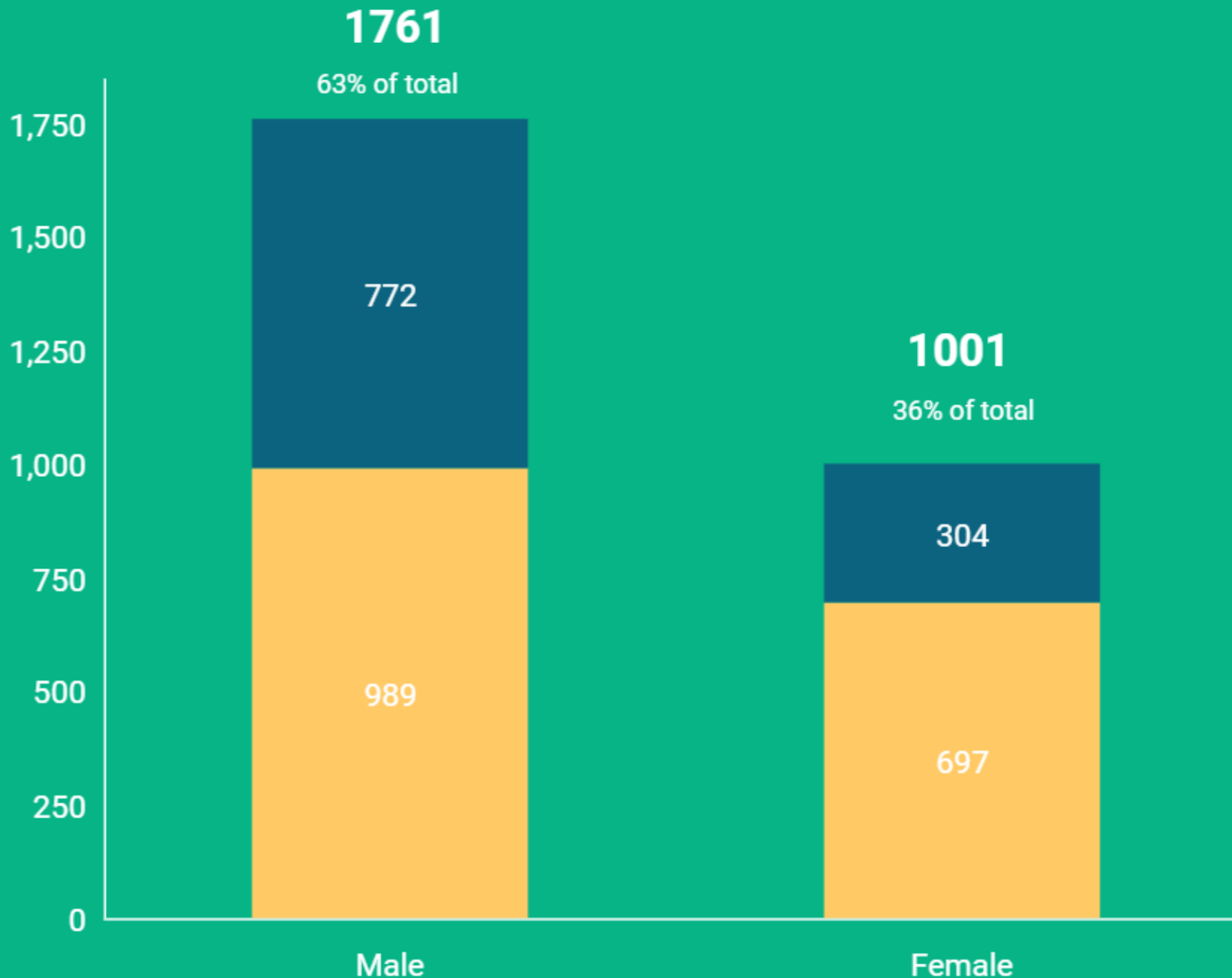
In 2025, **59% of people over the age of 64 were unsheltered**, compared to 50% in 2024.

Unsheltered homelessness among the 18-24 age group **decreased by 29%** since 2024.

People aged 35-44 experienced the greatest increase in homelessness across all age groups.

95% of children under 17 are sheltered, compared to 97% in 2024. **Unsheltered homelessness among children under 17 increased by 92% (from 13 children to 25 children).**

Gender



People who identify as male (71%) are **more likely to experience unsheltered homelessness** compared to people who identify as female (29%).

Women experienced an **overall increase in homelessness of almost 4%**.

Note: Genders outside of Male and Female not pictured due to small values. Total=19

PIT Count Data by County



ORANGE
COUNTY



OSCEOLA
COUNTY



SEMINOLE
COUNTY



Announcements!

Disaster Prep Committee

Interest Form



Next Meeting:

Tuesday, May 27th

10am to 11:30 am

Location: Hybrid

